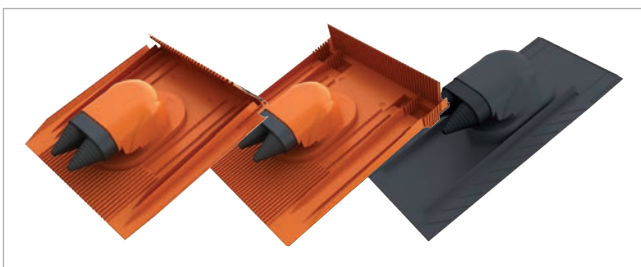
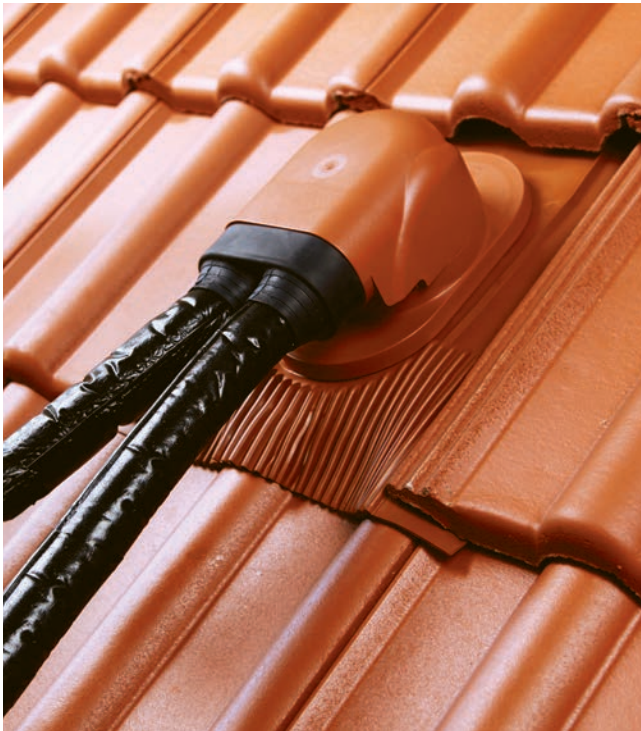


# Venduct® Duo Solar Outlet Kit

The universal solution for installing twin cables



Note: When working with the products please always observe the Klöber instructions for use, DIN standards and specialist rules.

The Venduct® Duo Solar Outlet Kit is the ideal solution for allowing twin cables pass through the roof while fully protected from rain and wind. The outer casing can be twisted variably at the side, so that laying direction of the pipes can be chosen freely. The Venduct® Duo Outlet Kit is prefabricated and quick and easy to install.

## Product features & benefits

- Rain-proof feed-through of twin cables due to the combination with an elastic EPDM sealing collar
- Rotatable cap
- Low structural height
- Additional rubber seal for feeding through a cable of max. Ø 6 mm (e.g. sensor cable)
- Simple and workmanlike laying of cables with the clip-on system
- Can be installed with very few tools

## Area of application

- Can be used for twin cables with a diameter of 10 to 55 mm
- Matches almost all customary clay and concrete roof tiles, slates, beaver-tail, fibre cement sheets and bitumen shingles
- Suitable for roof pitch of 15°-65° (KE 8270)  
22°-60° (KE 8271)

## Versions & Product codes

- Venduct® Duo Solar Outlet Kit suitable for clay roof tiles and concrete tiles KE 8270
- Venduct® Duo Solar Outlet Kit with a long apron, suitable for large-scale and strongly profiled clay roof tiles and concrete roof slabs KE 8267
- Venduct® Duo Solar Outlet Kit for slate/beaver-tail covering, suitable for slate, beaver-tail, fibre cement sheets and bitumen shingle roofing KE 8271

## Packaging

1 piece/carton, 24 pieces/pallet

## Related products

Sealing collar for solar pipes and cables

- DN 42–55 mm KE 8090
- DN 50–70 mm KE 8091

## TECHNICAL DATA

Material	Base kits: hard PVC (cap) / soft PVC (apron) Elastic EPDM collar
Resilience	UV, weather and age-resistant, maintains its form
Miscellaneous	Building Material Class B2
Diameter	Can be used for twin cables with a diameter of 10 - 55 mm

TS-SL#15-EN-0515. We assume no liability for typing errors.